

## Connector Specification

### 1.Scope

This specification applies to connector for photovoltaic.

### 2.TYPE

Male connector : Type YS-254 plug

Female connector : Type YS-255 receptacle

### 3.Reference standard

- EN50521 : 2008
- UL1703 3<sup>rd</sup> Edition

### 4.Characteristics

#### (1) Electrical characteristics

- ① Rating Voltage : DC 1000V (according to IEC)  
: DC600V (according to UL)
- ② Rating current : MAX 30A
- ③ Dielectric Voltage : AC 6000V/1min
- ④ Impulse Voltage : 12.5kV
- ⑤ Contact Resistance : Max 5mΩ (except conductor resistance of cable)

#### (2) Others

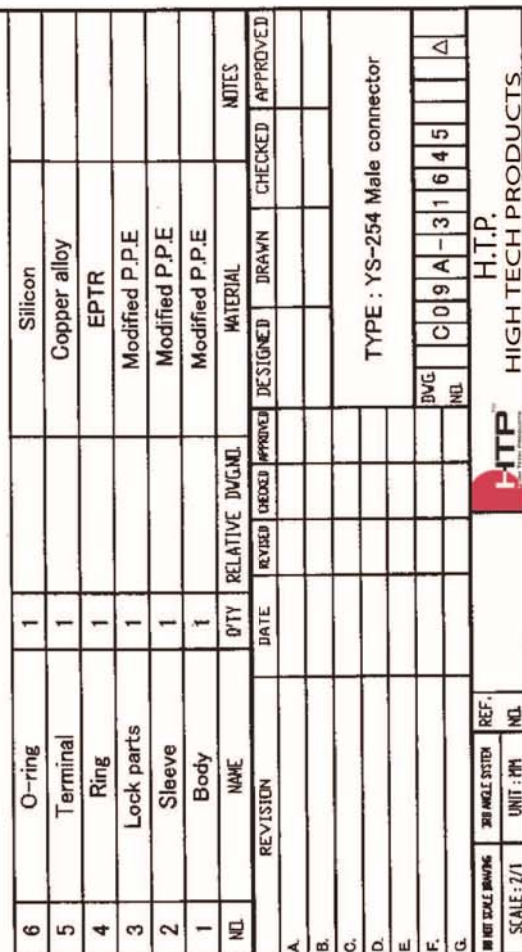
- ① Temperature range : -40°C to +85°C (according to IEC)  
: -40°C to +75°C (according to UL)  
( This temperature means to be used under natural environment )
- ② IP protection : IP67 (in plugged state)  
( This characteristics means that connector passed the IP test of  
EN50521 : 2008 standard )
- ③ Plugging cycle count : 100times

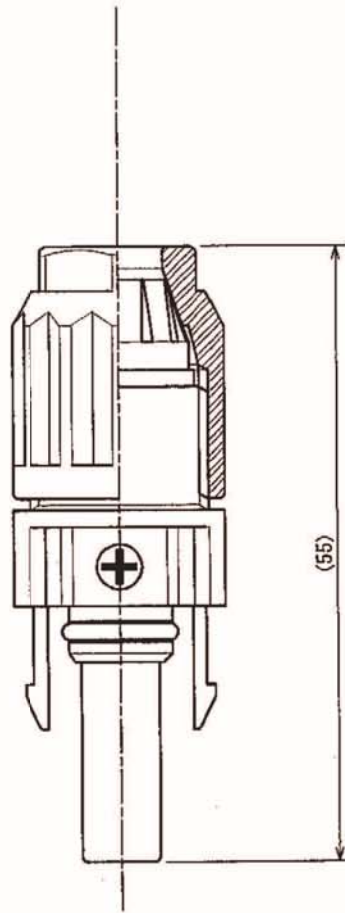
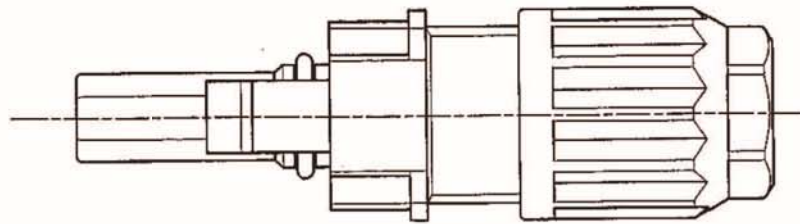
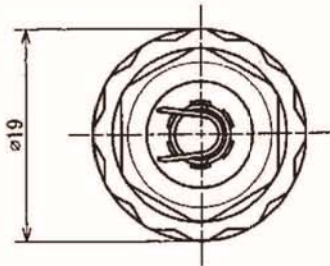
NEW  
M12 PANEL MOUNTING WITH SCREW  
CONTACTS



NEW  
DIN 43650 IN LINE



[illegible]



NO.	NAME	Q'TY	RELATIVE	DWG/CL	MATERIAL	NOTES
7	O-ring	1			Silicon	
8	O-ring	1			Silicon	
5	Terminal	1			Copper alloy	
4	Ring	1			EPTR	
3	Lock parts	1			Modified P.P.E	
2	Sleeve	1			Modified P.P.E	
1	Body	1			Modified P.P.E	

REVISED

CHECKED

APPROVED

DATE

DRAWN

CHECKED

APPROVED

TYPE : YS-255 Female connector

DWG.

C09A-31646

Δ

REF.

NO.

SCALE : 2/1

UNIT : MM

H.T.P.

H.T.P.  
HIGH TECH PRODUCTS

H.T.P.

HIGH TECH PRODUCTS



NO NET SCALE BOARDING	300 INGLE SYSTEM	REF.
SCALE : 2/1	UNIT : MM	NO.