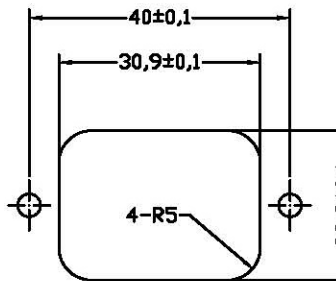
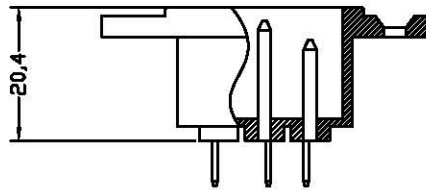


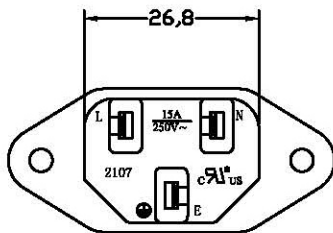
FOR FRONT MOUNTING USE



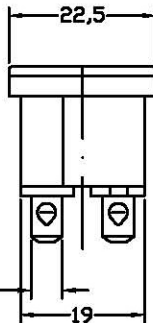
FOR REAR MOUNTING USE



PANEL CUT-OUT



4,8x0,8t



A: MATERIAL:

1. HOUSING: PBT WITH 30% GF UL 94V-0
2. TERMINAL: COPPER ALLOY

B: CHARACTERISTICS:

1. RATING: 10A250V AC EUROPE
15A250V AC NORTH AMERICA
2. INSULATION RESISTANCE: OVER 100M Ω 500V DC
DIELECTRIC STRENGTH: 2000V AC 0.5mA, 1 MINUTE

C: APPROVALS:

UL, CSA, VDE, DEMKO, SEMKO, SEV, FIMKO & NEMKO CCC, KTL

D: ORDERING OPTIONS:

ORDER#	ITEM REQ.	TERMINAL DIFFERENCES
2107-CQ1-G	① + ②	4.8 SOLDER/Q.D.TABS

3	T-07QB	TERMINAL	2PCS	Ø4.8x0.8t	COPPER ALLOY	TIN-PLATED
2	T-07QA	TERMINAL	1PCS	Ø4.8x0.8t	COPPER ALLOY	TIN-PLATED
1		HOUSING	7g	SNAP-IN TYPE	PBT-30%GF	THERMOPLASTIC
ITEM	PART NO.	PART NAME	QTY	SPECIFICATION	MATERIAL	REMARKS

TOLERANCE UNLESS OTHERWISE MARKED			NAME: SCREW-MOUNT AC INLET	
DIMENSION: 0-6 : ±0.1 6-30 : ±0.2 30-120: ±0.3			SPEC.: —	
MATERIAL: SEE ABOVE			APPROVED	CHECKED
DRAW BY 侯锡强			JOB NO.:	
UNIT: mm			08/02/21	
SCALE 1:1				
SHEET 1 OF 1				

REV	DATE	DESCRIPTION	WRITE	APPD.
A.0	2008.02.21	RE DRAWING	侯锡强	

A
4

